

Rev. 07/13/10

Features & Options

- Compact & Cost Effective
- 75 mA and 100mA models
- Self-resetting Thermal Fuse
- Operation & Fault LED Indicators
- Ruggedized Circuitry
- Fixed or Adjustable Outputs
- Output Protected Against Overload and Accidental Short Circuit

**Snaptrack
Mountable!**



**VC100 with
optional Snaptrack**

BAPI VC75 and VC100 voltage converters are a cost effective way of converting 24 VAC to 5, 12, 15 or 24 VDC for use on peripheral devices that require DC voltage. The converters are available with outputs of 75 mA or 100 mA and fit into standard 2.75" snaptrack.

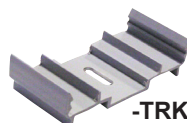
Although most BAPI room units can run on 24 VAC power, converting to DC power eliminates the AC power "noise" which can affect the room sensor readings. BAPI's tests show that fluctuating and inaccurate signal levels are possible when AC power wiring is present in the same cable as the signal lines. To minimize the AC voltage noise, the DC converter must be mounted as close to the controller as possible. Do not mount the converter at the sensor end of the wire, the AC will still couple into the sensor signal if you do. All three models are available with fixed outputs of 5, 12 or 15 VDC, or an adjustable output of 5-24 VDC.

As a reference, the VC75 has the capability to power the following BAPI sensors: one X-Combo Temperature/Humidity Combination Room Unit; two Room, Duct or Outside Air Humidity Sensors; three R_μP Temperature Sensor Room Units.

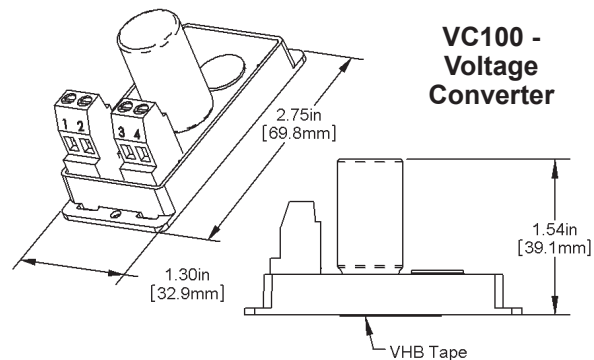
Ordering Information

Part Number	Description
ALC/VC75-5.....	5 VDC at 75 mA
ALC/VC75-10.....	10 VDC at 75 mA
ALC/VC75-12.....	12 VDC at 75 mA
ALC/VC75-15.....	15 VDC at 75 mA
ALC/VC75-ADJ....	5-24 VDC (adj.) at 75 mA
ALC/VC100-5.....	5 VDC at 100 mA
ALC/VC100-10.....	10 VDC at 100 mA
ALC/VC100-12.....	12 VDC at 100 mA
ALC/VC100-15.....	15 VDC at 100 mA
ALC/VC100-ADJ..	5-24 VDC (adj.) at 100 mA

Add **-TRK** to the end of the part number (**ALC/VC75-5-TRK**) to include a 1.25" wide piece of 2.75" snaptrack.



Specifications



Input Voltage:
18-30 VAC, 24 VDC

Input Current Max:
240 mA (5.8 VA)

Environmental Operation Range:
32°F to 158°F

Wiring:
Two pair 16 to 22 AWG

Rectification:
Half-Wave Rectified

Grounding:
AC & DC Ground are Common

Min. Input Voltage:
5, 10, 12 or 15VDC Output: 18 VAC
24VDC Output: 19 VAC

Mounting: Standard 2-3/4" snaptrack or double-sided foam tape (supplied)