



Features & Options

- Quick and Easy to Install and Forms an Excellent Cable Seal
- Pierceable Center Membrane for Simple Cable Insertion
- Works in Non-Threaded Ports of the BAPI-Box and Junction Box Enclosures
- Works in Panels with a Metal Thickness of .118" or Smaller

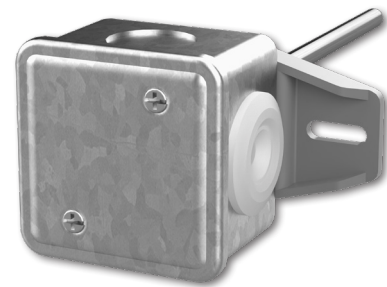


Top and bottom view of a Pierceable Knockout Plug

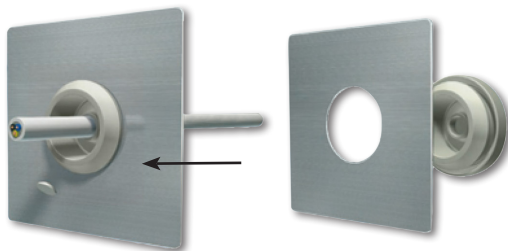
Pierceable Knockout Plugs are available for the open port in the BAPI-Box Crossover and BAPI-Box 4 Enclosure, as well as the non-threaded ports in the BAPI-Box, BAPI-Box 2 and Junction Box enclosures. The plugs will also work in panels with a metal thickness of 0.118" or smaller.

The plugs are made of TPE (Thermoplastic Elastomer) and feature a pierceable center membrane for easy wire insertion. When used with the proper diameter cable, the plugs form an excellent cable seal after piercing.

When installed in the open port of the BAPI-Box 4 or BAPI-Box Crossover Enclosure, the Pierceable Knockout Plug increases the enclosure rating from IP10 to IP44.



Pierceable Knockout Plug installed in a J-Box (top) and in the open port of a BAPI-Box Crossover Enclosure (left).



Pierceable Knockout Plug installation and wire insertion.



Ordering Information

Part Number	Description	List Price
BA/PKP-100.....	Pierceable Knockout Plugs for Enclosure Ports, pack of 100.....	\$130

Gray shaded items follow the Buy and Resale Multiplier.

Submittal datasheets without List Prices are available on our website at www.bapihvac.com

Specifications

- Material:** UV-Resistant TPE (Thermoplastic Elastomer)
- Temperature Operating Range:** -58°F to 257°F (-50°C to 125°C)
- Protection Rating:** IP67
- Pierceable Center Membrane Hole Size:** 0.807" (20.5mm)
- Cable Diameter Range:** 0.236" to 0.512" (6 to 13mm)
- Panel Thickness:** 0.02" to 0.118" (0.5 to 3mm)

