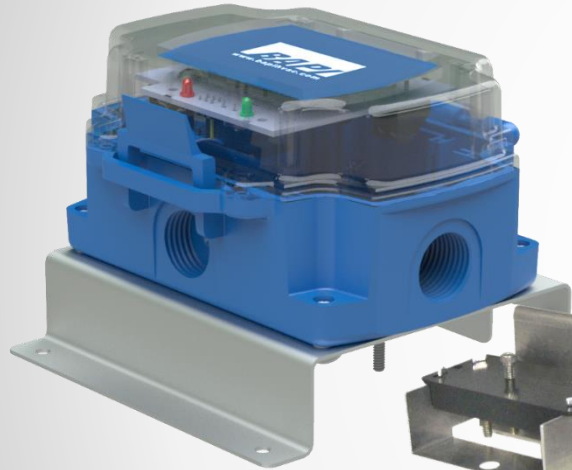


WATER LEAK DETECTORS



Attached (Spot) Detector



Remote Detector



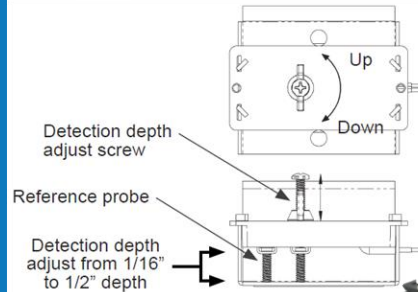
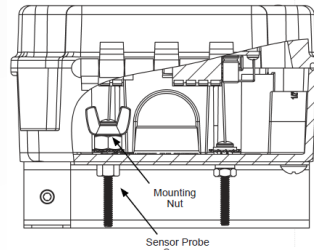
Rope Detector

ATTACHED & REMOTE

- Detection within 5 seconds with local LED alarm indication
- Alarm output, two 5 Amp relays
- Automatic or manual unit reset

The Water Leak Detector is designed to sense the presence of water and alert a central monitoring system of the potentially destructive situation. Upon water detection, the alarm output relays change state, and a local red LED illuminates.

The sensors detect dirty and purified water, deionized water, distilled water and reverse osmosis (RO) water



ROPE SENSOR

- Detection within 5 seconds with local LED alarm indication
- Alarm output, two 5 Amp relays
- Rope detects water along its entire length
- Automatic or manual unit reset

The Water Leak Detector is designed to sense the presence of water and alert a central monitoring system of the potentially destructive situation.

Upon water detection, the alarm output relays change state, and a local red LED illuminates. The sensor detects dirty and purified water, deionized water, distilled water and reverse osmosis (RO) water.



Rope Sensor Mounting Bracket

DOOR MONITOR ALARM



Features

- For use with normally closed-door switches
- Door status LEDs
- Two auxiliary relays with status LEDs
- Audible annunciator
- User selectable time periods

Why monitor your door?

- Security
- Energy savings
- Maintenance savings
- Reduce loss of product
- Help control the environment within the space

APPLICATIONS

Security

- Indicates door status, open, closed.

Cost Savings

- Asset protection with coolers and freezers
- Computer server rooms
- Cold storage facilities

Solutions

- Alerts nearby personnel with LEDs & Buzzer
- Two relays to provide remote indication
 - Security office
 - Manager's office
 - BAS for both alerting and data tracking



BAPI-GUARD

- Prevents tampering, damage and unauthorized adjustment
- Exceptional airflow for proper thermostat operation
- Made from thick, durable polycarbonate
- Key lock protected
- Low profile design with two sizes to fit most thermostats
- Horizontal or vertical mounting

The BAPI-Guard prevents tampering, physical damage and unauthorized adjustment of thermostats. The attractive design is available in two sizes to fit most thermostats.

The BAPI-Guard is made of thick, durable polycarbonate and features exceptional airflow, key lock protection, horizontal or vertical mounting and easy installation with hardware included.



OUTDOOR LIGHT LEVEL SENSOR

- 0 to 2,000 Lux or 0 to 875 foot candle ranges
- Extremely sensitive, even in dim lighting (<10 ft. candle or 108 lux)
- 0 to 5V, 0 to 10V or 4 to 20 mA output
- Rugged and watertight enclosure (IP66, NEMA 4)

The BAPI Outdoor Light Level Sensor conserves energy by allowing lights to be shut off when the ambient light level exceeds a specified level. The sensor can also help ensure safety by allowing lights to be turned on when the ambient light falls below a specified level.



POWER SUPPLIES & VOLTAGE CONVERTERS



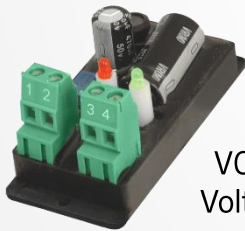
VC350A-EZ 350mA
Voltage Converter



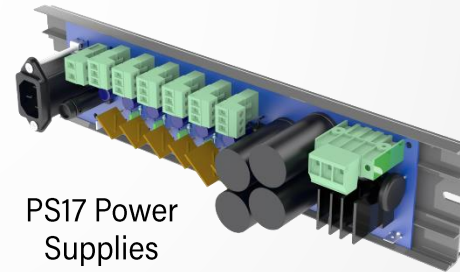
VC2000 Voltage
Converter



PDM - Power
Distribution Module



VC350A 350mA
Voltage Converter



PS17 Power
Supplies

VC350A EZ VOLTAGE CONVERTER

- DIN Rail, Snaptrack or Surface Mount
- Compact & Cost-Effective 350 mA Unit
- Self-resetting Thermal Fuse
- Operation & Fault LED Indicators
- Fixed or Adjustable Outputs
- Output Protected Against Overload and Shorting



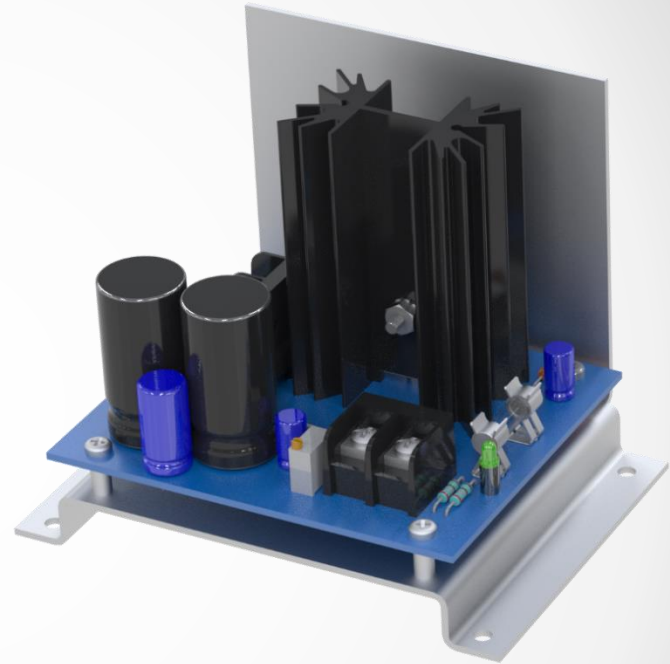
VC350A 350mA Voltage Converter

- Compact & Cost-Effective 350 mA Unit
- Ruggedized Circuitry, Self-resetting Thermal Fuse, Operation and Fault LEDs
- Fixed or Adjustable Outputs
- Output Protected Against Overload and Shorting

VC2000 VOLTAGE CONVERTER

BAPI's VC2000 Voltage Converters are accurate, rugged and reliable power sources designed for commercial energy management applications.

- Compact and Cost Effective
- Regulated and Adjustable 1.2 VDC to 24 VDC Output
- Output Protected Against Overload and Accidental Short Circuit



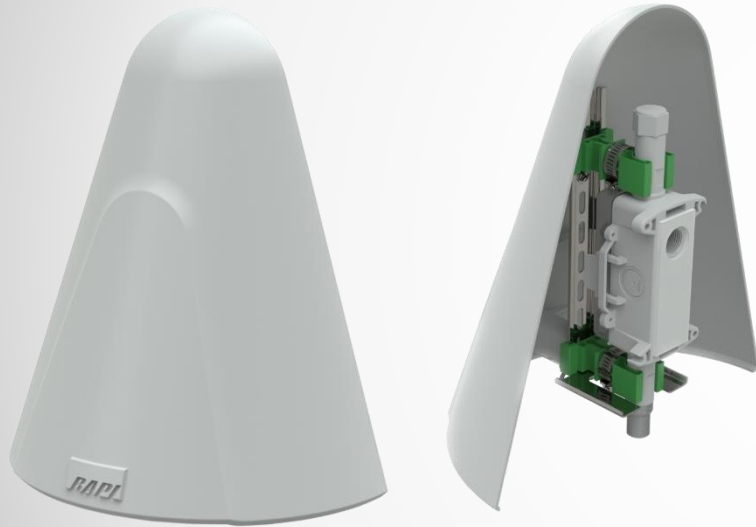
PDM

The PDM - Power Distribution Module is a low voltage (12 to 30 VAC/VDC) power distribution module designed to take a single power source and distribute that power to multiple circuits.

- 3 or 5 Circuit Power Distribution
- 12 to 30 VAC/VDC Operation
- Master Power Switch w/ 10 Amp Breaker
- Individual Circuit Power Switches
- Individual 3 Amp Circuit Protection
- Power and Fault LEDs



WEATHER SHADE



- Improves accuracy by blocking solar heat gain
- Simple and sturdy mounting method
- UV-stabilized plastic prevents yellowing
- Protects the sensor filter to extend filter life

External temperature, humidity and air quality sensors can be affected by solar heat gain. The BAPI Weather Shade effectively blocks solar heat gain, improving the accuracy of the sensor.

ADAPTOR PLATES

BAPI Adaptor Plates are designed to cover wall imperfections when installing wall sensors or thermostats. They are made in four different sizes and three different colors to match the sensor. The Adaptor Plates can be painted or wall papered in place if architecturally required.

- Cloud White: Similar to our Delta and BAPI-Stat 4 style room sensors
- Off White: Standard on BAPI-Stat 3 style room sensor
- Bright White: Standard in our BAPI-Stat "Quantum" and "Quantum Prime" room units



OTHER ACCESSORIES



Flexible Probe Bracket

- Makes mounting of averaging sensors quick and easy
- Eliminates risk of kinking and damaging the probe
- Scored break off for 1/4" rigid probe mounting
- Nylon material limits heat/cold conduction to the probe



Sealant Filled Connectors

- Creates a Weatherproof Wire Connection
- Crimp-On & Twist-On Styles Available



Liquid Tight Fitting

- Available for the open port in the BAPI-Box Crossover Enclosure. Includes the locknut



Pierceable Knockout Plugs

- Quick and Easy to Install and Forms an Excellent Cable Seal
- Pierceable Center Membrane for Simple Cable Insertion
- Works in Non-Threaded Ports of the BAPI-Box and Junction Box Enclosures
- Works in Panels with a Metal Thickness of .118" or Smaller