

Rev. 07/13/10

Features & Options

- Compact & Cost Effective
- 75 mA, 100mA & 350 mA models
- Self-resetting Thermal Fuse
- Operation & Fault LED Indicators
- Ruggedized Circuitry
- Fixed or Adjustable Outputs
- Output Protected Against Overload and Accidental Short Circuit

Snaptrack Mountable!



VC350 with optional Snaptrack



VC75 with optional Snaptrack

BAPI voltage converters are a cost effective way of converting 24 VAC to 5, 12, 15 or 24 VDC for use on peripheral devices that require DC voltage. The converters are available with outputs of 75 mA, 100 mA or 350 mA. All converters are very compact and fit into standard 2.75" snaptrack.

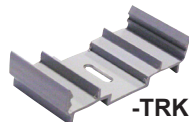
Although most BAPI room units can run on 24 VAC power, converting to DC power eliminates the AC power "noise" which can affect the room sensor readings. BAPI's tests show that fluctuating and inaccurate signal levels are possible when AC power wiring is present in the same cable as the signal lines. To minimize the AC voltage noise, the DC converter must be mounted as close to the controller as possible. Do not mount the converter at the sensor end of the wire, the AC will still couple into the sensor signal if you do. All three models are available with fixed outputs of 5, 12 or 15 VDC, or an adjustable output of 5-24 VDC.

As a reference, the VC75 has the capability to power the following BAPI sensors: one X-Combo Temperature/Humidity Combination Room Unit; two Room, Duct or Outside Air Humidity Sensors; three RµP Temperature Sensor Room Units.

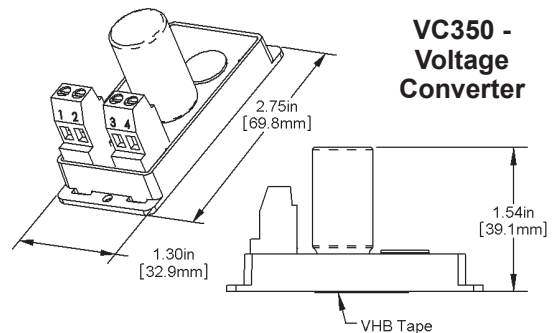
Ordering Information

Part Number	Description
ALC/VC75-5	5 VDC at 75 mA
ALC/VC75-10	10 VDC at 75 mA
ALC/VC75-12	12 VDC at 75 mA
ALC/VC75-15	15 VDC at 75 mA
ALC/VC75-ADJ	5-24 VDC (adj.) at 75 mA
ALC/VC100-5	5 VDC at 100 mA
ALC/VC100-10	10 VDC at 100 mA
ALC/VC100-12	12 VDC at 100 mA
ALC/VC100-15	15 VDC at 100 mA
ALC/VC100-ADJ	5-24 VDC (adj.) at 100 mA
ALC/VC350-5	5 VDC at 350 mA
ALC/VC350-10	10 VDC at 350 mA
ALC/VC350-12	12 VDC at 350 mA
ALC/VC350-15	15 VDC at 350 mA
ALC/VC350-ADJ	5-24 VDC (adj.) at 350 mA

Add **-TRK** to the end of the part number (**ALC/VC75-5-TRK**) to include a 1.25" wide piece of 2.75" snaptrack.



Specifications



Input Voltage: 18-30 VAC, 24 VDC

Input Current Max: VC75/100: 240 mA (5.8 VA)
VC350: 760 mA (18.25 VA)

Environmental Operation Range:
VC75/100: 32°F to 158°F
VC350: -20°F to 158°F

Wiring: Two pair 16 to 22 AWG

Rectification: Half-Wave Rectified

Grounding: AC & DC Ground are Common

Min. Input Voltage:
5 VDC Output: 18 VAC for all units
12 or 15 VDC Output: 18 VAC for all units
24VDC Output: 19 VAC for VC75/100 or 23 VAC for VC350

Mounting: Standard 2-3/4" snaptrack or double-sided foam tape (supplied)